



2014 User Conference

Harris School Solutions - SIS

May 23, 2014

Harris School Solutions – SIS

- CSI>Harris>PSSG>Harris School Solutions>**SIS**, SNS, FINS
 - 8 SIS products nationally
 - Flagship products = iPass & go.edustar
 - Largest client 500,000 students, smallest 84
 - Key states MA, PA, KS, CO, CA, PR
 - Staff 45
 - Schools/SIS experience ave. 15 years
 - Grow through acquisitions and organically
 - Operational mantra: Agile and Tight

I believe that these business units are small for a reason...that the advantages of being agile and tight far outweigh economies of scale.

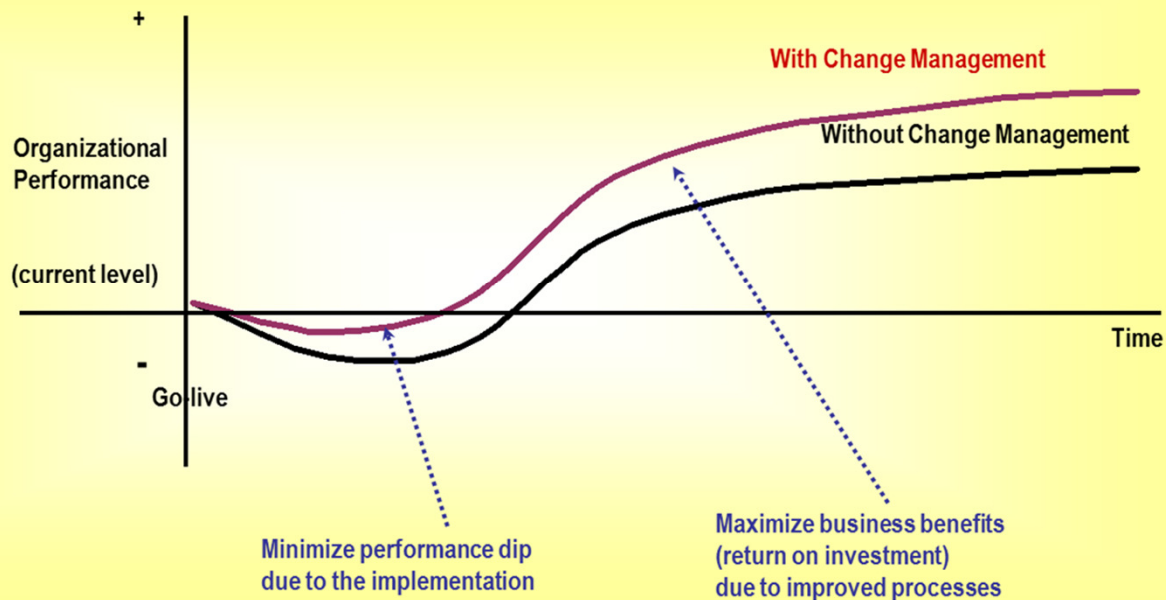
- *Mark Leonard*
2012 President's Letter



MASS INITIATIVES

1. Evolve iPass with your input
2. Improve Support Response
3. Maintain SIF momentum
4. Enhance hosting & iAutoAlert infrastructure

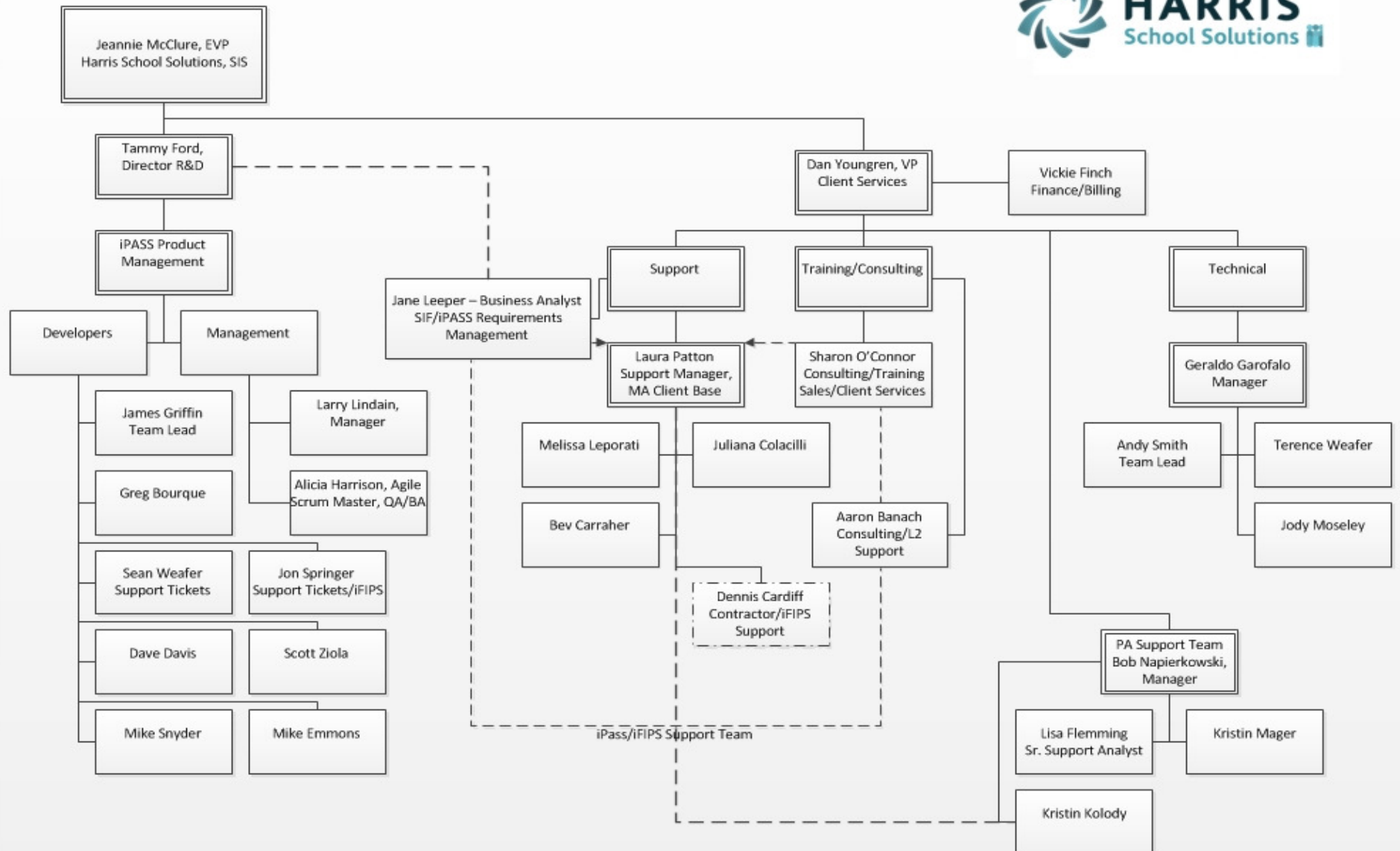
REQUIRE MASS CHANGE



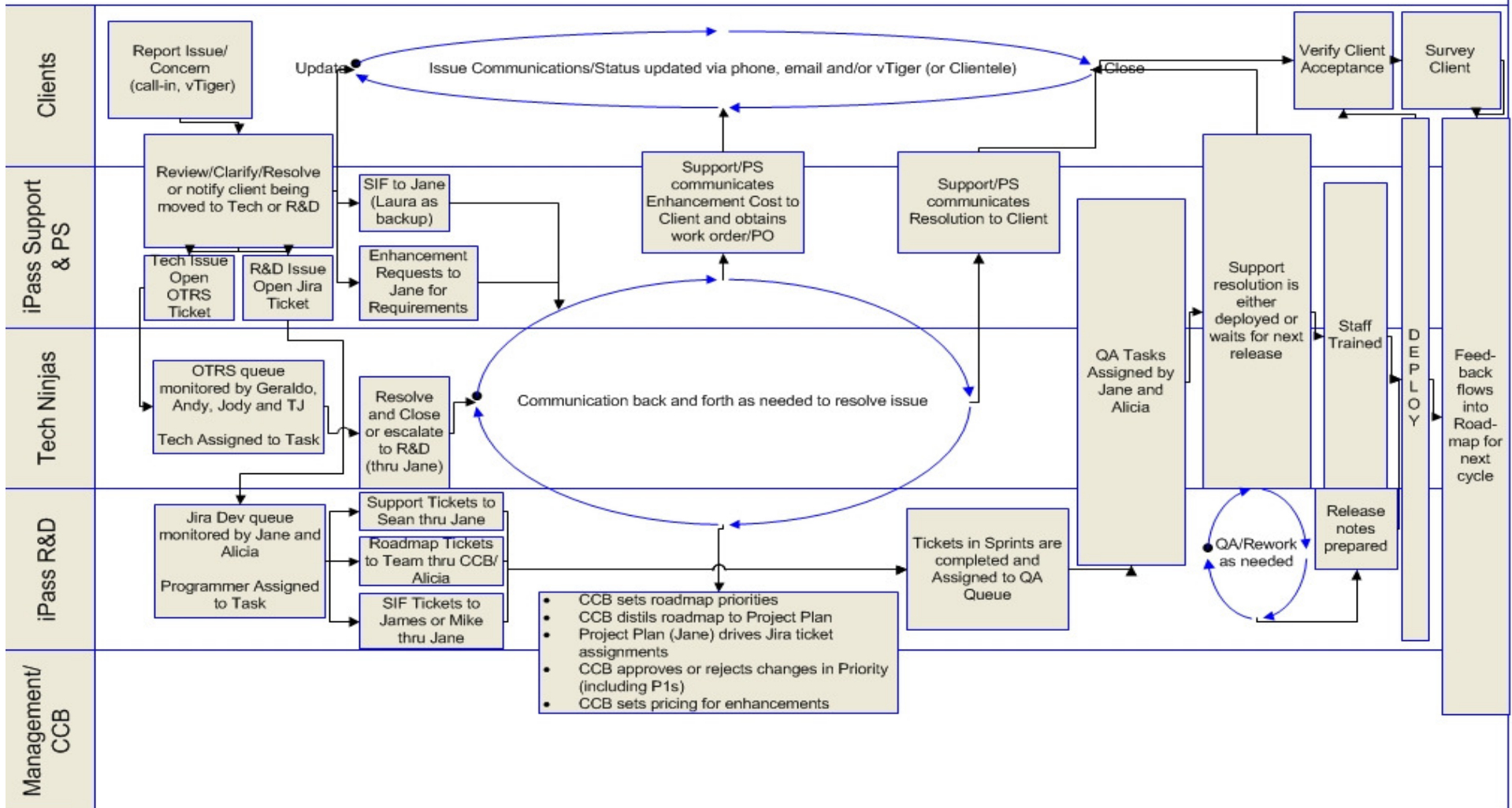
HSS SIS

PERFORMANCE REQUIRES CONTROL





iPass - Harris Support/R&D Processes



www.imgsoftware.com/kb/

Information Marketing Group Resource Center

Login

Knowledgebase

News

Search: [Advanced search](#)

Knowledgebase

- Activity/Group System
- Administration
- Alerts
- Attendance
- Biographical
- College System
- Competency/Standards System
- Discipline
- District System
- DOE ID Manager
- Bus System
- Districts New to iPass
- Events
- Grading
- iAutoAlert
- iFips
- iHealth
- iTeacher
- Letters
- iParent
- iPassToGo
- iStaff
- iStudent
- Lockers
- Lunch System
- Menu System
- My Data
- My Queries
- Scheduling
- Security System
- SIF
- Standard Tests
- Success Plans/EPP's
- System Configuration
- Technical Support FAQ

Resource Center

News

- [Annual iPass Customer Conference on Friday, May 23, 2014](#)
05 May, 2014
Please join us on May 23, 2014 for the Annual Customer Conference at The International in Bolton, MA. Details and Registration are found...
- [Q & A for IMG Customers regarding the Harris Computers acquisition](#)
02 Dec, 2013
IMG Customer Question and Answer sheet Q: Will current IMG software employees remain with Harris? A: Yes. The current IMG...
- [Important Links to Customer Care Portal, IMG Software and IMG WebEx Site](#)
27 Jun, 2013
Please use the following links to important sites: To access the Customer Care Portal, please click here:...

Categories

- | | | | |
|--|---|--|--|
| <ul style="list-style-type: none">Activity/Group SystemBiographicalDistrict SystemEventsiHealthiPassToGoLunch SystemSchedulingSuccess Plans/EPP'sView Only Access | <ul style="list-style-type: none">AdministrationCollege SystemDOE ID ManagerGradingiTeacheriStaffMenu SystemSecurity System (1)System ConfigurationIMG 2010 Customer Conference Presentations (9)
IMG 2010 Customer Conference Presentations | <ul style="list-style-type: none">AlertsCompetency/Standards SystemBus SystemiAutoAlertLettersiStudentMy DataSIF
SIF (Student Interoperability Framework)Technical Support FAQ (13)
Frequently asked questions about technical support for iPass and iFipsiPass Patch Release Notes (3)
iPass Patch Release Notes | <ul style="list-style-type: none">AttendanceDisciplineDistricts New to iPass (10)
Information for School Districts that are new to iPassiFips (1)iParentLockersMy QueriesStandard TestsUser Fees |
|--|---|--|--|

Most Viewed

- [Grades Maintenance](#)
Grades Maintenance
23 Jul, 2009
- [Scheduling Help Document](#)
Scheduling Help Document
19 Jan, 2011
- [iParent Help Document](#)
iParent Help Document

Recent Articles

- [iPass Patch Release Notes 7.0.20140521 and 7.0.20140521r](#)
iPass Patch Release Notes 7.0.20140521 and 7.0.20140521r
22 May, 2014
- [Patch Release Notes 7.0.20140509](#)
Patch Release Notes 7.0.20140509
16 May, 2014
- [Patch Release Notes 7.0.20140509](#)
Patch Release Notes 7.0.20140509

Main room divided during break

Session 1 – 9:15 – 10:15

Session 2 – 10:25 – 11:25

Lunch 11:30 – 12:20 in Main Building (golf carts available)

Session 3 – 12:30 – 1:30

Session 4 – 1:40 – 2:40

Session 3 – Room Changes (Downstairs)

- Edwin Teaching and Learning – Lexington Room
- Gradebook – Concord
- Behavior Dashboard - Plymouth